

	A ⁽⁴⁾	B	C ⁽⁴⁾	D	E	F	G	H	J	K	L	M	N	P	R
H241/3&4kW	528	(1) 283	140	196	(2)	160	100	(3)	150	^{24M20} 162	^{24M22} 170	10	86	170	45
H241/4kW	548	..	290	..	225	..	190	112
H241/5.5&7.5kW	590	..	309	..	270	..	216	132	..	^{24M32}
H241/9.2&11kW	627	178
H241/11&15kW	723	..	328	210	335	..	254	160	..	^{24M40} ..	12
H241/18.5kW	767	254
H241/22kW	822	..	341	241	366	..	279	180
H241/30&37kW	943	(6)	407	305	405	..	318	200	..	^{24M50} ..	16	125	..	54	..
H241/45kW	1021	..	423	311	463	..	356	225
H241/55kW	1105	..	442	349	516	..	406	250	..	^{24M53} ..	20
H241/75kW	1171	..	464	368	457	280

(1) 25 H241 - 76mm
40 H241 - 79mm
50 H241 - 83mm
65 H241 - 87mm
80 H241 R - 90mm
100 H241 - 91mm

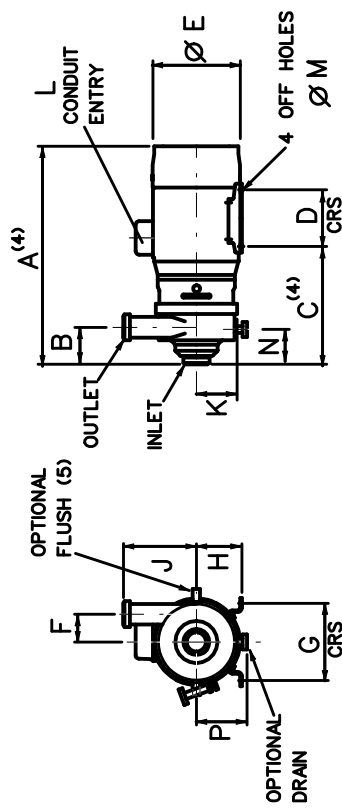
(2) 25 H241 - 128mm
40 H241 - 124mm
50 H241 - 121mm
65 H241 - 116mm
80 H241 R - 113mm
100 H241 - 103mm

(3) 25,40 H241 - 180mm
65,80,100 H241 - 220mm

(4) FOR PUMPS WITH LOW PRESSURE FLUSH, OR EXTERNAL SEALS ADD DIMENSION 'R'

(5) FLUSH CONNS MTD DIAM. OP. ON HORIZ. CENTRE LINE

(6) 50 H241 - 109mm
65 H241 - 113mm
80 H241 R - 116mm
100 H241 - 117mm



STANDARD PUMP DIMENSIONS A & E VARY ACCORDING TO MAKE OF MOTOR

	A ⁽⁴⁾	B	C ⁽⁴⁾	D	E	F	G	H	J	K	L	M	N	P	R	S	T
H241/ TYPE 21 COWL	555	(1) 180	355	210	(2)	170	180	(3)	^{24M20} 162	^{24M22} 170	86	170	350	3	45
H241/ TYPE 25 COWL	608	..	150	440	250	..	230	225	443
H241/ TYPE 32 COWL	710	..	170	520	320	..	275	245	..	^{24M32}	495
H241/ TYPE 39 COWL	830	..	240	570	390	..	254	280	..	^{24M40}	597	4
H241/ TYPE 43 COWL	870	608	430	..	279	300	640
H241/ TYPE 520 COWL	977	(6)	171	670	520	..	461	370	..	^{24M50} 125	..	763	..	763	..	54	..
H241/ TYPE 651 COWL	1250	..	355	570	650	..	545	460	..	^{24M53}	973	..	973

(1) 25 H241 - 76mm
40 H241 - 79mm
50 H241 - 83mm
65 H241 - 87mm
80 H241 R - 90mm
100 H241 - 91mm

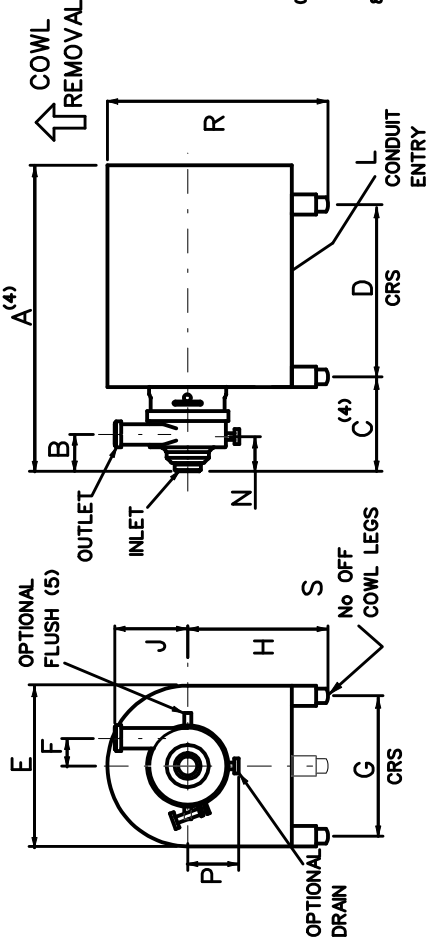
(2) 25 H241 - 128mm
40 H241 - 124mm
50 H241 - 121mm
65 H241 - 116mm
80 H241 R - 113mm
100 H241 - 103mm

(3) 25,40 H241 - 180mm
65,80,100 H241 - 220mm

(4) FOR PUMPS WITH LOW PRESSURE FLUSH, OR EXTERNAL SEALS ADD DIMENSION 'T'

(5) FLUSH CONNS MTD DIAM. OP. ON HORIZ. CENTRE LINE

(6) 50 H241 - 109mm
65 H241 - 113mm
80 H241 R - 116mm
100 H241 - 117mm



COWLED PUMP

H241 PUMP - DIMENSION DRAWING

MDM PUMPS LTD

Spring Lane
Malvern, Worcs
England, WR14 1BP
Tel 01684 892678
Fax 01684 892841

Date	9/11/05
Ch'd	DP
Scale	NTS