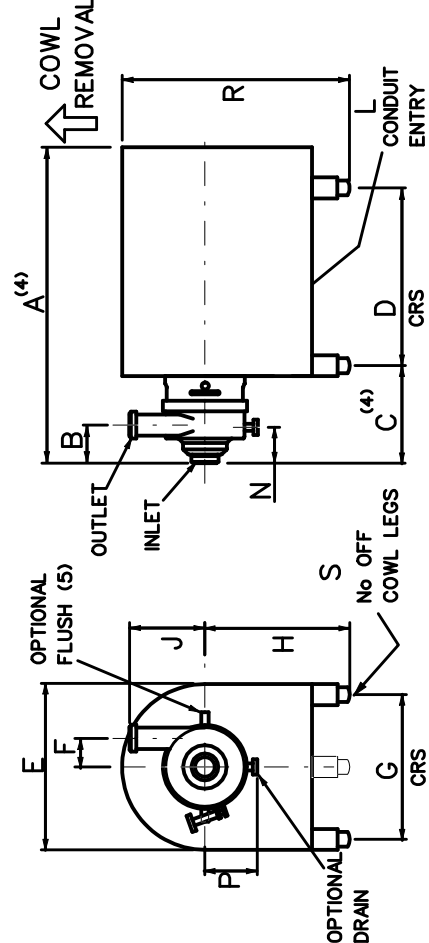


STANDARD PUMP  
 DIMENSIONS A & E VARY ACCORDING TO MAKE OF MOTOR

	A <sup>(4)</sup>	B	C <sup>(4)</sup>	D	E	F	G	H	J	K	L	M	N	P	R
H191/1.5kW	487	(1) 276	100	180	(2) 140	90	(3) 115	115	115	115	115	10	86	140	45
H191/2.2kW	..	..	125	..	..	..	..	..	..	..	..	..	..	..	..
H191/3&4kW	526	..	283	140	196	..	160	100	..	..	..	..	..	..	..
H191/4kW	548	..	290	..	225	..	190	112	..	..	..	..	..	..	..
H191/5.5&7.5kW	590	..	309	..	270	..	216	132	..	..	2x432	..	..	..	..
H191/9.2&11kW	627	..	..	178	..	..	..	..	..	..	..	..	..	..	..
H191/11&15kW	723	..	328	210	335	..	254	160	..	..	2x440	12	..	..	..
H191/18.5kW	767	..	..	254	..	..	..	..	..	..	..	..	..	..	..
H191/22kW	822	..	341	241	366	..	279	180	..	..	..	..	..	..	..
H191/30&37kW	943	(6) 407	305	405	..	318	200	..	..	2x460	16	125	..	..	54

- (1) 25 H191 - 76mm
- (2) 25 H191 - 95mm
- 40 H191 - 79mm
- 50 H191 - 81mm
- 65 H191 - 87mm
- 80 H191 R - 90mm
- 100 H191 - 91mm
- (3) 25,40,50 H191 - 180mm
- 65, 80,100 H191 - 220mm
- (4) FOR PUMPS WITH LOW PRESSURE FLUSH, OR EXTERNAL SEALS ADD DIMENSION 'R'
- (5) FLUSH CONNS MTD DIAM. OP. ON HORIZ. CENTRE LINE
- (6) 50 H191 - 109mm
- 65 H191 - 113mm
- 80 H191 R - 116mm
- 100 H191 - 117mm



COWLED PUMP

	A <sup>(4)</sup>	B	C <sup>(4)</sup>	D	E	F	G	H	J	K	L	M	N	P	R	S	T
H191/ TYPE 21 COWL	555	(1) 180	355	210	(2) 170	180	(3) 180	180	(3) 180	180	180	86	140	350	3	45	
H191/ TYPE 25 COWL	608	..	150	440	250	..	230	225	..	..	..	..	..	443	..	..	
H191/ TYPE 32 COWL	710	..	170	520	320	..	275	245	..	2x432	..	..	..	495	..	..	
H191/ TYPE 39 COWL	830	..	240	570	390	..	254	280	..	2x440	..	..	..	597	4	..	
H191/ TYPE 43 COWL	870	..	..	608	430	..	279	300	..	..	..	..	..	640	..	..	
H191/ TYPE 520 COWL	977	(6) 171	670	520	..	461	370	..	..	2x460	125	..	..	763	..	..	

- (1) 25 H191 - 76mm
- (2) 25 H191 - 95mm
- 40 H191 - 79mm
- 50 H191 - 81mm
- 65 H191 - 87mm
- 80 H191 R - 90mm
- 100 H191 - 91mm
- (3) 25,40,50 H191 - 180mm
- 65, 80,100 H191 - 220mm
- (4) FOR PUMPS WITH LOW PRESSURE FLUSH, OR EXTERNAL SEALS ADD DIMENSION 'T'
- (5) FLUSH CONNS MTD DIAM. OP. ON HORIZ. CENTRE LINE
- (6) 50 H191 - 109mm
- 65 H191 - 113mm
- 80 H191 R - 116mm
- 100 H191 - 117mm

H191 PUMP - DIMENSION DRAWING

MDM PUMPS LTD  
 Spring Lane  
 Maivern, Worcs  
 England, WR14 1BP  
 Tel 01684 892578  
 Fax 01684 892841

Date 16/1/06  
 M.R.  
 Ch'd H.L.  
 Scale NTS

