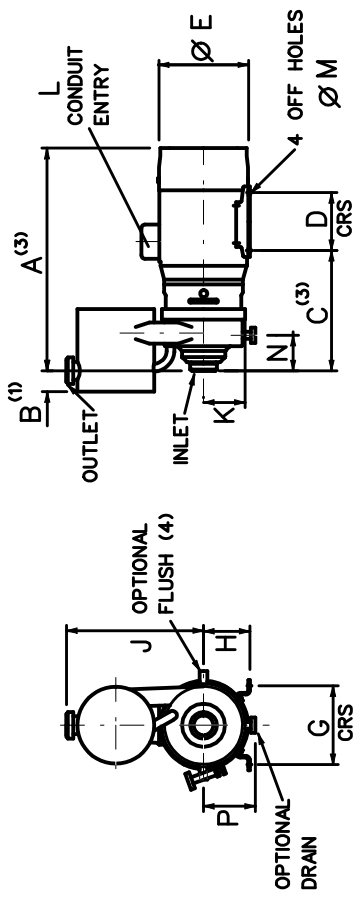


DIMENSIONS SUBJECT TO CHANGE WITHOUT NOTIFICATION

DIMENSIONS SHOULD NOT BE USED FOR INSTALLATION PURPOSES UNLESS SPECIFICALLY ENDORSED



	A ⁽³⁾	B ⁽¹⁾	C ⁽³⁾	D	E	G	H	J	K	L	M	N	P	R
H161AS/2.2kW	487	56	276	125	180	140	90	454	105	140	10	86	130	45
H161AS/3&4kW	526	..	283	140	196	160	100	140
H161AS/4kW	548	..	290	..	225	190	112
H161AS/5.5&7.5kW	590	..	309	..	270	216	132	244
H161AS/9.2&11kW	627	178
H161AS/11&15kW	723	..	328	210	335	254	160	244	12
H161AS/18.5kW	767	254
H161AS/22kW	822	..	341	241	366	279	180

(1) FOR POLISHED PUMP ADD 87mm

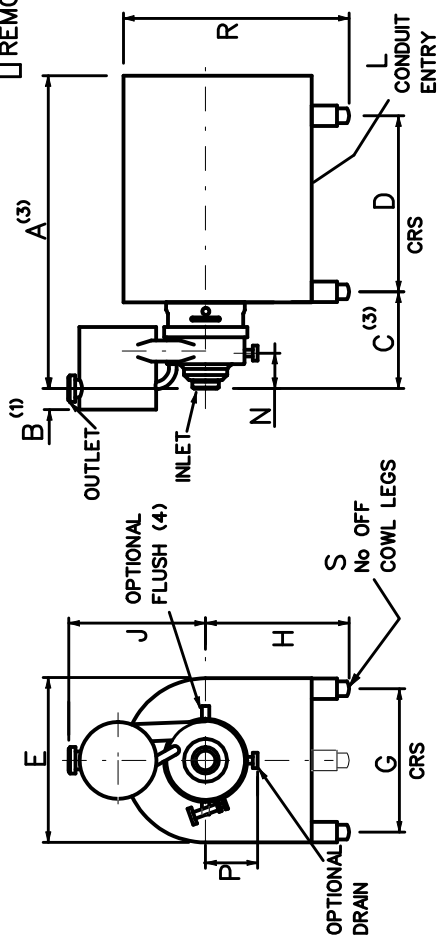
(3) FOR PUMPS WITH LOW PRESSURE FLUSH, OR EXTERNAL SEALS ADD DIMENSION 'R'

(4) FLUSH CONNS M10 DIAM. OP. ON HORIZ. CENTRE LINE

STANDARD PUMP

DIMENSIONS A & E VARY ACCORDING TO MAKE OF MOTOR

↑ COWL REMOVAL




	A ⁽³⁾	B ⁽¹⁾	C ⁽³⁾	D	E	G	H	J	K	L	M	N	P	R	S	T
H161AS/ TYPE 21 COWL	555	56	180	355	210	170	180	454	105	140	10	86	130	350	3	45
H161AS/ TYPE 25 COWL	608	..	150	440	250	230	225	443
H161AS/ TYPE 32 COWL	710	..	170	520	320	275	245	244	495
H161AS/ TYPE 39 COWL	830	..	240	570	390	254	280	244	597	4	..
H161AS/ TYPE 43 COWL	870	608	430	279	300	640

(1) FOR POLISHED PUMP ADD 87mm

(3) FOR PUMPS WITH LOW PRESSURE FLUSH, OR EXTERNAL SEALS ADD DIMENSION 'T'

(4) FLUSH CONNS M10 DIAM. OP. ON HORIZ. CENTRE LINE

COWLED PUMP



MDM

MDM PUMPS LTD
 Spring Lane
 Malvern, Worcs
 England, WR14 1BP
 Tel 01684 892678
 Fax 01684 892841

Date	21/5/08
Ch'd	DP
Scale	NTS

H161/AS PUMP - DIMENSION DRAWING